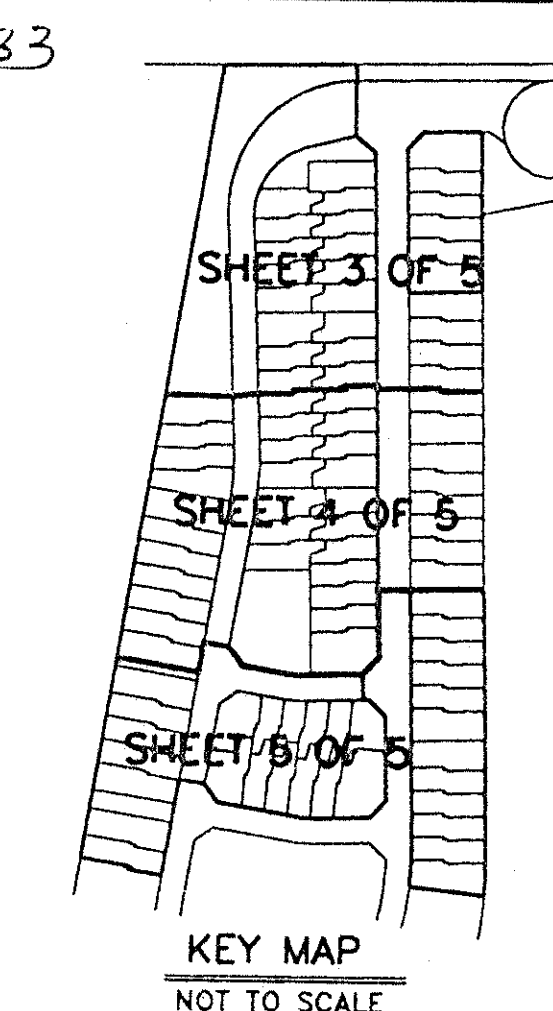


# LAKE CHARLESTON TRACT "G" PLAT 2

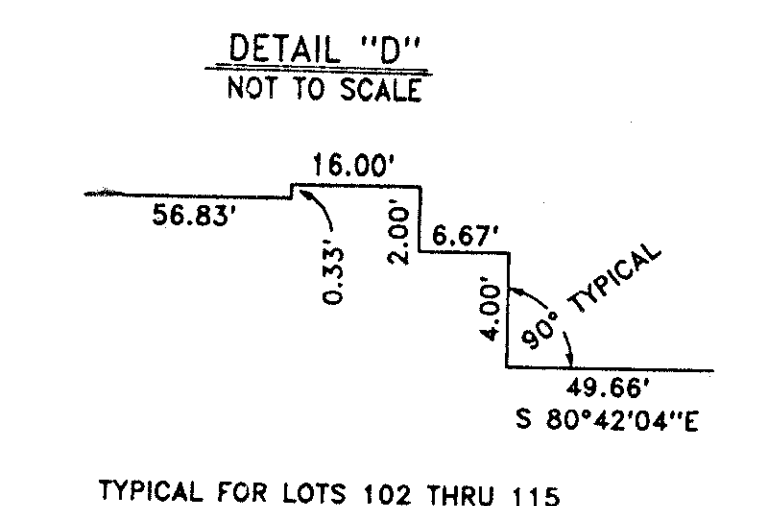
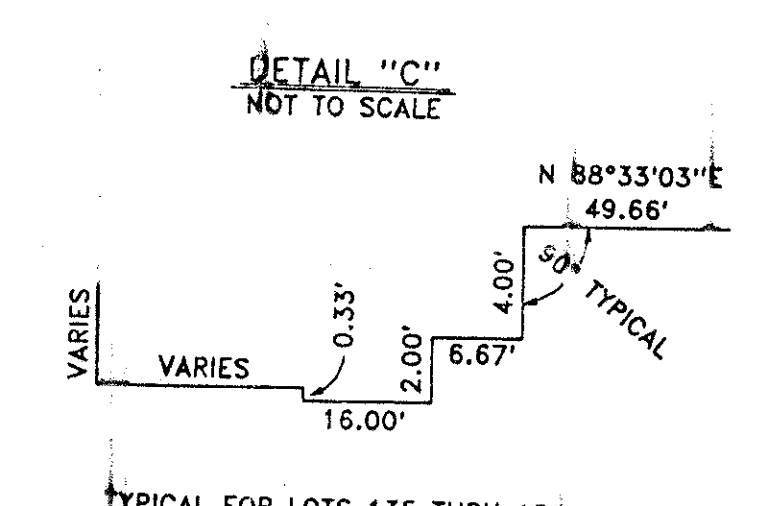
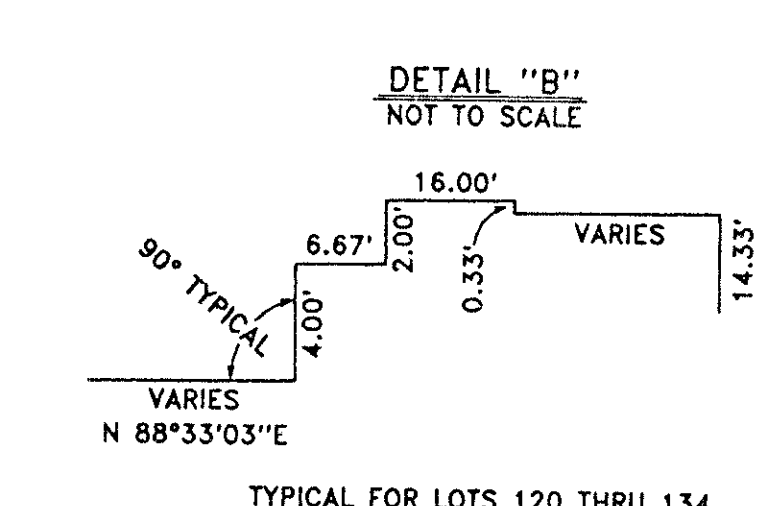
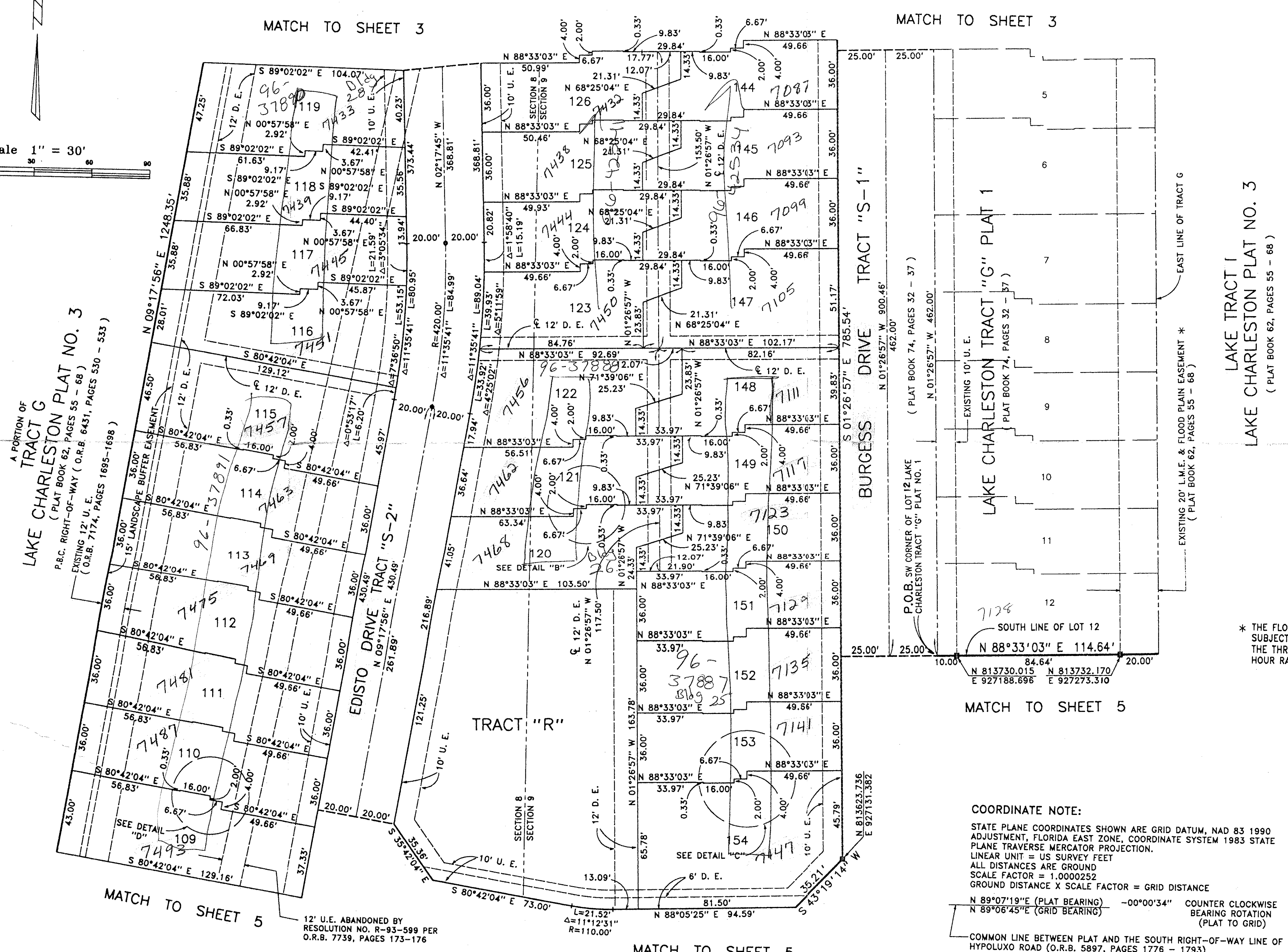
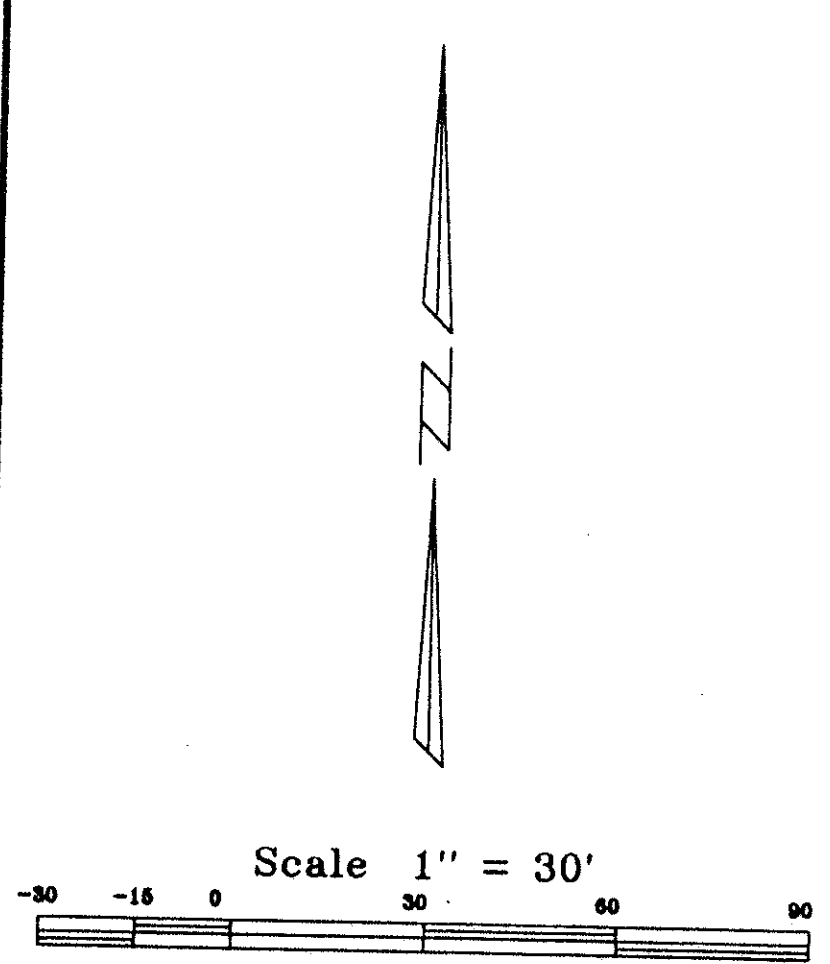
0533-033

105

A PART OF LAKE CHARLESTON PLANNED UNIT DEVELOPMENT  
 BEING A REPLAT OF A PORTION OF TRACT G OF LAKE CHARLESTON PLAT NO.3 AS RECORDED  
 IN PLAT BOOK 62, PAGES 55 THRU 68, PUBLIC RECORDS OF PALM BEACH COUNTY, FLORIDA  
 LYING IN SECTIONS 4,5,8 AND 9, TOWNSHIP 45 SOUTH, RANGE 42 EAST  
 SHEET 4 OF 5  
 MARCH, 1996



STATE OF FLORIDA  
 COUNTY OF PALM BEACH  
 This Plat was filed for record at \_\_\_\_\_  
 M. This \_\_\_\_\_ day of \_\_\_\_\_, 19\_\_\_\_  
 and duly recorded in Plat Book No. \_\_\_\_\_  
 on Page \_\_\_\_\_  
 Dorothy H. Wilken, Clerk of the Circuit Court  
 By \_\_\_\_\_ D.C.



\* THE FLOOD PLAIN EASEMENT IS SUBJECT TO FLOODING DURING THE THREE YEAR TWENTY-FOUR HOUR RAINFALL EVENT.

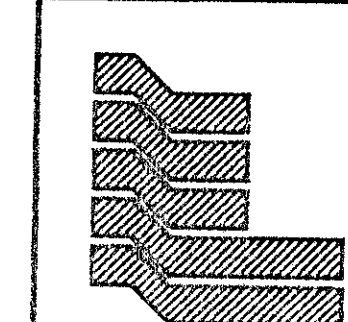
COORDINATE NOTE:  
 STATE PLANE COORDINATES SHOWN ARE GRID DATUM, NAD 83 1990  
 ADJUSTMENT, FLORIDA EAST ZONE, COORDINATE SYSTEM 1983 STATE  
 PLANE TRAVERSE MERCATOR PROJECTION.  
 LINEAR UNIT = US SURVEY FEET  
 ALL DISTANCES ARE GROUND  
 SCALE FACTOR = 1.0000252  
 GROUND DISTANCE X SCALE FACTOR = GRID DISTANCE  
 N 89°07'19"E (PLAT BEARING) -00°00'34" COUNTER CLOCKWISE  
 N 89°06'45"E (GRID BEARING) BEARING ROTATION  
 (PLAT TO GRID)  
 COMMON LINE BETWEEN PLAT AND THE SOUTH RIGHT-OF-WAY LINE OF  
 HYPOLEX ROAD (O.R.B. 5897, PAGES 1776 - 1793)

*Ret 86/96*

*0533-033 78/105*

SUBDIVISION \* LAKE CHARLESTON  
 BOOK 78 PAGE 105  
 FLOOD MAP #170A  
 ZONING RT5  
 GNAD #49  
 ZIP CODE 33467  
 PUD NAME LAKE CHARLESTON  
 TAZ - 438

THIS INSTRUMENT WAS PREPARED BY LESLIE BISPOTT UNDER THE SUPERVISION OF CRAIG S. PUSEY, PROFESSIONAL LAND SURVEYOR AND MAPPER OF LANDMARK SURVEYING AND MAPPING, INC.



Landmark Surveying & Mapping Inc.  
 1850 FOREST HILL BOULEVARD  
 PH. (407)433-5405 SUITE 100 W.P.B. FLORIDA

LAKE CHARLESTON TRACT "G"  
 PLAT 2